



SAGE FAS

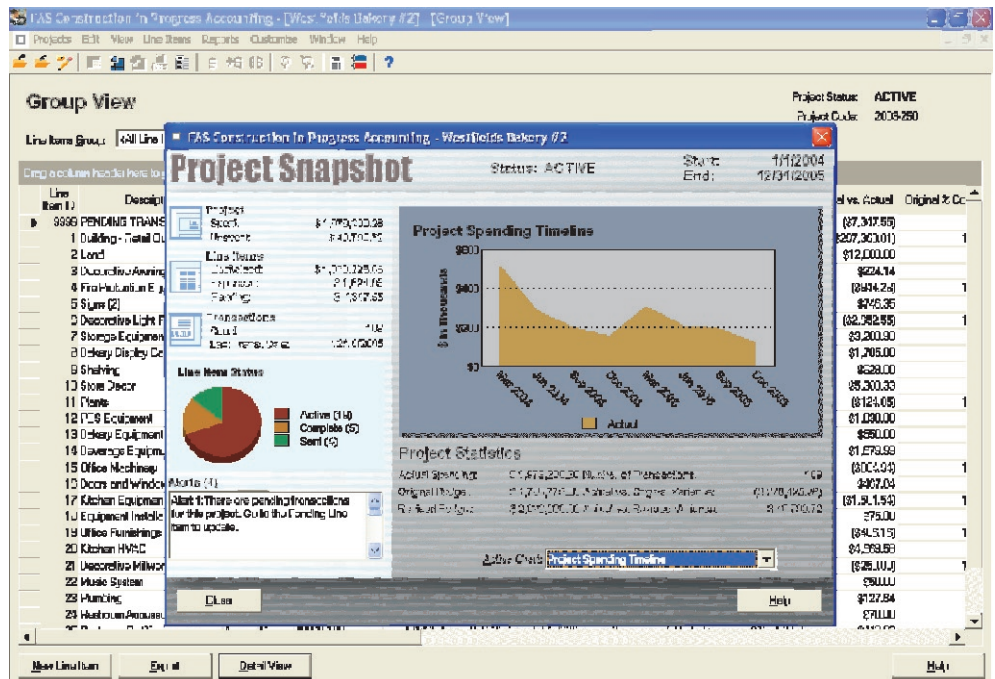
FAS 500 CIP ACCOUNTING

SCALABLE CONSTRUCTION IN PROGRESS READILY DELIVERED

- Easily manage unlimited projects of any type or size—up to hundreds of thousands of individual components
- Faster processing times with Windows Server™ and Microsoft® SQL infrastructures
- Locate key project information quickly and easily with the Project Snapshot feature
- Easily accumulate and summarize numerous purchase orders, invoices, receipts, and tasks—including physical components, shipping costs, labor/assembly charges, and unlimited miscellaneous items

TOP-NOTCH SUPPORT IS JUST A CALL OR CLICK AWAY

Sage FAS SupportPlus members benefit from an unmatched level of customer support. You can use Sage FAS SupportPlus Online to get answers 24 hours a day, 7 days a week. Or call our friendly experts for help. What's more, Sage FAS SupportPlus users can also download software upgrades, access multimedia tutorials, and take advantage of exclusive discounts on new products.



FAS 500 CIP Accounting delivers advanced construction in progress capabilities utilizing the power of a SQL server environment.

Gain greater speed, scalability and achieve control over your fixed assets even before they become fixed assets with FAS 500 Construction in Progress (CIP) Accounting. Whether you're assembling multi-component equipment, upgrading machinery, renovating buildings, or just accumulating separate invoices prior to placing a fixed asset into service, FAS 500 CIP Accounting is designed for SQL Server-based computing environments, giving you additional scalability as your business grows.

With multiple levels of detail tracking and numerous built-in reports, you can easily manage and report on unlimited projects including current project status, actual vs. budget variance, and project details. Manage both capitalized and expensed assets for convenient project tracking, and get key project information at a glance with the convenient "Project Snapshot" feature. Plus, with this fully integrated solution your fixed assets are instantly created in FAS 500 Asset Accounting upon project completion. When it comes to meeting your demanding construction in progress fixed asset needs, FAS 500 CIP Accounting delivers the capacity that only a scalable client/server architecture can provide.

From developing innovative products to providing award-winning customer support, Sage Software is dedicated to surpassing expectations in all aspects of our business. For more information about FAS 500 CIP Accounting, please call us toll free at 800-368-2405, or visit our Web site at www.sagefas.com. Sage customer service representatives are standing by to provide you with top-notch products and service.



FAS 500 CIP Accounting

"Sage Software has a real focus on fixed assets—it's not just a sideline for them. I think that's why their solution is so comprehensive. I was also impressed by the fact that Sage Software consistently updates its solutions... a lot of companies just don't keep up with the latest tax codes."

Greg Strohmeier, Assistant Manager, Accounting
ITW

Manage your fixed assets before they become fixed assets

- Monitor both physical and financial completion status of projects and track all of your project details including status, contacts, notes, and all the financials
- Customizable to your business with over 45 user-defined fields covering all levels of detail
- Copy, move and split line items to ease expense handling
- Customize user profiles to specific product features and projects with built-in security settings allow
- Get a broad look at your business across all projects with consolidated reports
- FAS Report Writer lets you create unlimited custom reports on every aspect of your project—including project status, asset financials, and invoice details
- Easily handle expenses with the ability to copy, move, and split line items
- Numerous reports available at the project, line item, and transaction level

Optimum scalability

- Enjoy faster processing times with Windows Server™ and Microsoft® SQL infrastructures
- Designed with a client/server architecture and support for multiple databases

- Easily accounts for hundreds of thousands of fixed assets
- Allows for centralization of fixed asset databases for a more secure operating environment
- Open standards provide for easy in-house development and customization

Seamless integration for powerful results

- Enjoy seamless integration with the entire line of Sage FAS fixed asset management solutions, including Sage FAS Gov and Sage FAS Nonprofit
- Instantly create new fixed assets in FAS Asset Accounting after project completion—including multiple assets from a single line item
- Easily tie out project balances to your general ledger with point-in-time reporting
- The convenient "import wizard" allows you to easily import monthly invoicing transactions from your Accounts Payable system to keep your project up-to-date

Minimum System Requirements		
	Single User / Network Client Requirements	Network Server Requirements*
Operating System	Microsoft® Windows 2000 with SP 4; Windows XP (Professional or Home) with SP 1 or 2	Novell® NetWare® Server v6.0, or 6.5; Windows 2000 Server with SP 4; Windows Server® 2003 (Standard or Enterprise)
Processor	600 Mhz or higher minimum; 1 Ghz or higher recommended	600 Mhz or higher minimum; 1 Ghz or higher recommended
RAM	128MB or higher	Multi-purpose servers: 256MB of RAM or higher
Free Disk Space	300MB for the FAS Program, 70MB minimum for FAS Report Writer (if applicable); 200MB required for full install of FAS Report Writer (if applicable)	600MB for the FAS program installation
Database Server	N/A	SQL Server 2000** with SP 3 or higher or SQL Server 2005

Remote Access Requirements	
	Operating System and/or Third-party Software
Client-Based Solutions	Windows XP with Remote Desktop Connection enabled Third-party remote access solution (such as PC Anywhere™)
Server- and Network-Based Solutions	Windows 2000 running Windows Terminal Services with SP 4; Windows Server™ 2003 running Windows Terminal Services (Standard Edition or Enterprise Edition) Windows 2000 with SP 4 or Windows XP (Professional or Home) with SP 1 or 2, in conjunction with Citrix® MetaFrame XP(XPe, XPa, or XPs) Third-party Virtual Private Network (VPN) <i>NOTE: Cannot be used across subnets, VPNs or WANs without Windows Terminal Services or Citrix.</i>